

Description

The water-driven foam generator HiEx-250 WD is designed to produce high expansion foam up to 190 m³/min. A fan is driven by reaction force from three water nozzles mounted on the fan shaft. The unit is to be connected to a foam solution line.



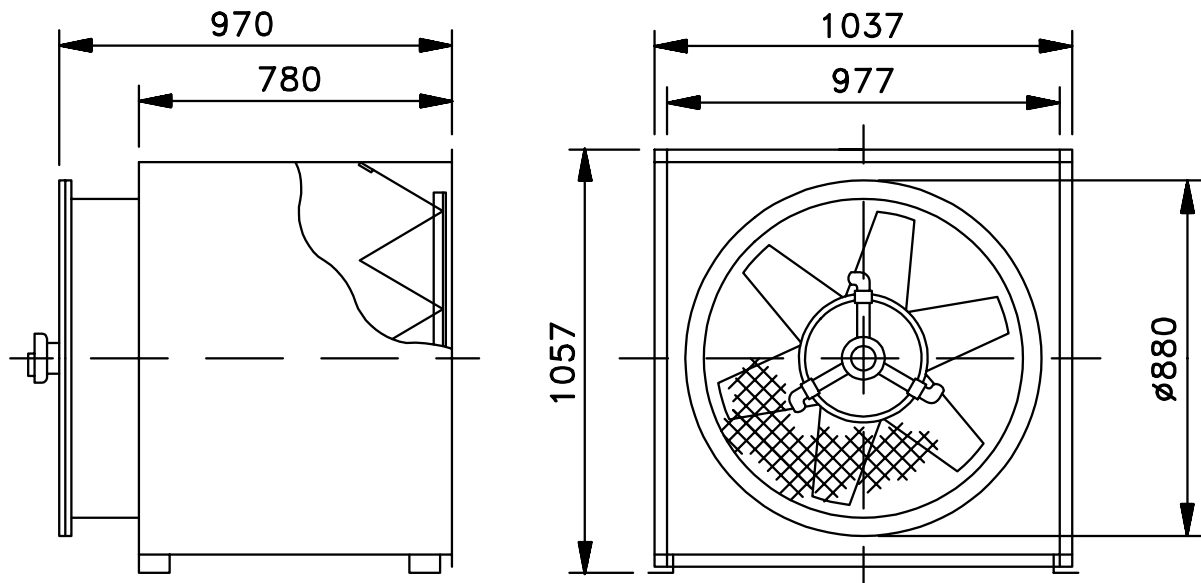
HIGH EXPANSION FOAM GENERATOR

00/01

1022/34

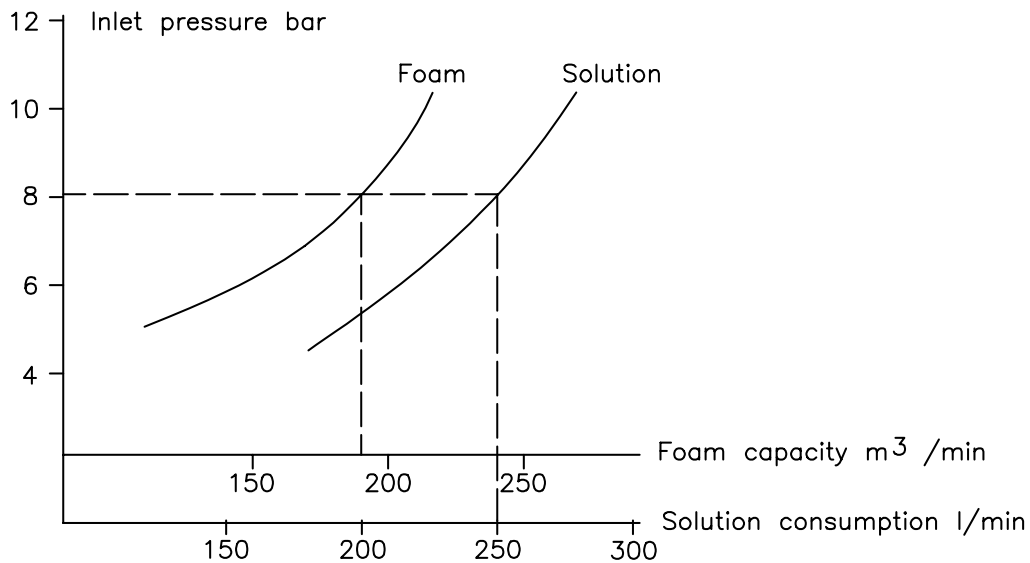
Dimensions

HiEx-250 WD



Performance data

1 bar = 0,1 MPa = 14,5 psi



Example: At inlet pressure 8 bar, the solution consumption is 250 l/min and the foam capacity is 190 m³ /min.

Material: Stainless steel or mild steel
Surface treatment mild steel: Zink primer and red 2-component paint
Connection: Female 2" BSP
Weight: 98 kg/216 lbs



Technical changes reserved without notice

Svenska Skum AB Tel: +46 303 57700
Box 674 Fax: +46 303 58200
SE-442 18 Kungälv e-mail: info@skum.com
Sweden Internet: www.skum.com

Svenska Skum B.V. Tel: +31 71 5419415
P.O. Box 2061 Fax: +31 71 5417330
NL-2301 CB LEIDEN e-mail: info@skum.nl
The Netherlands Internet: www.skum.com