

(replaces datasheets 1002/15/16/17)

General description

The MRM is a medium expansion foam generator, intended for fixed installation.

Application description

For coverage of banded areas, under dock protection, spill fires and protection of basins and loading facilities where a layer of medium expansion foam is required.

Product features

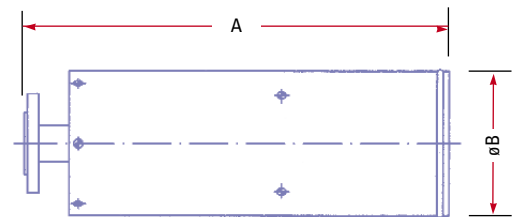
- All stainless steel body
- Hot-dipped slip-on galvanised flange and bronze nozzle
- Easy to install
- Large area coverage
- Suitable for indoor and outdoor use
- Capacity up to 2000 l/min

Connections

- Flanged to fit DIN PN16 or ANSI B 150lbs

Order information - please specify:

1. Size
2. Connection: DIN or ANSI
3. Capacity



Performance Data

MRM	50F		50F		65F		80F	
Inlet pressure	3 bar	5 bar	3 bar	5 bar	3 bar	5 bar	3 bar	5 bar
Water capacity	155 l/min	200 l/min	310 l/min	400 l/min	620 l/min	800 l/min	1,550 l/min	2,000 l/min
k-factor	89		178		358		895	
Foam expansion ratio approx*	50:1		50:1		50:1		50:1	
Dimensions A	700 mm		700 mm		1,035 mm		1,035 mm	
Dimensions B	240 mm		240 mm		380 mm		380 mm	
Connection	50 DIN PN 16 or 2" ANSI 150 lbs		50 DIN PN 16 or 2" ANSI 150 lbs		65 DIN PN 16 or 2 1/2" ANSI 150 lbs		80 DIN PN 16 or 3" ANSI 150 lbs	
Weight	12 kg / 27 lbs		12 kg / 27 lbs		23 kg / 51 lbs		25 kg / 55 lbs	
Range of jet	3-5 m							
Material: Body	Stainless steel							
Nozzle	Brass							
Flange	Galvanised steel							
* Depending on foam concentrate type					1 bar = 0,1 MPa = 14,5 psi			

