

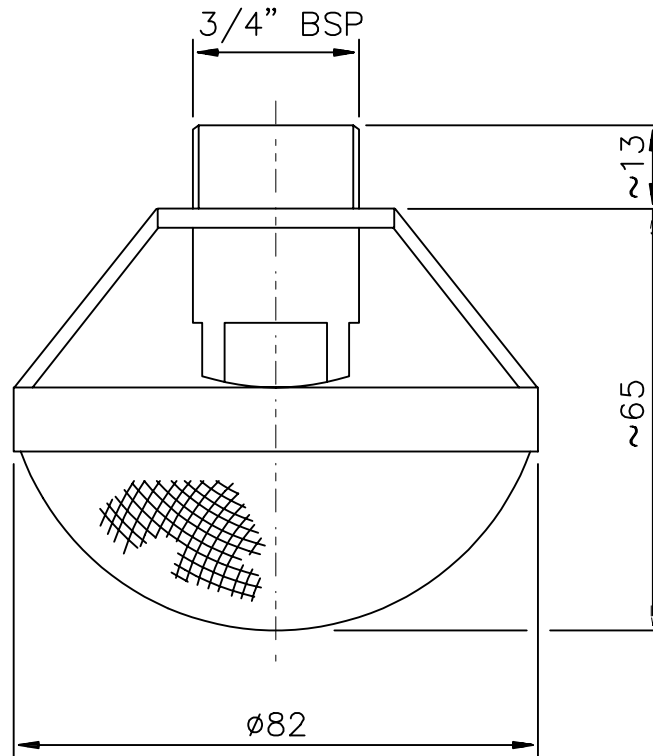
## **Description**

The low expansion foam sprinkler SPR-6 is designed for use in a deluge type foam sprinkler system. It is primarily intended for film forming foam type AFFF, but other types can also be used. The sprinkler has a

compact and rigid construction and can be used indoors as well as outdoors mounted vertically or horizontally. It is to be fed with foam solution from a separate foam proportioner.

**Dimensions**

**SPR-6**

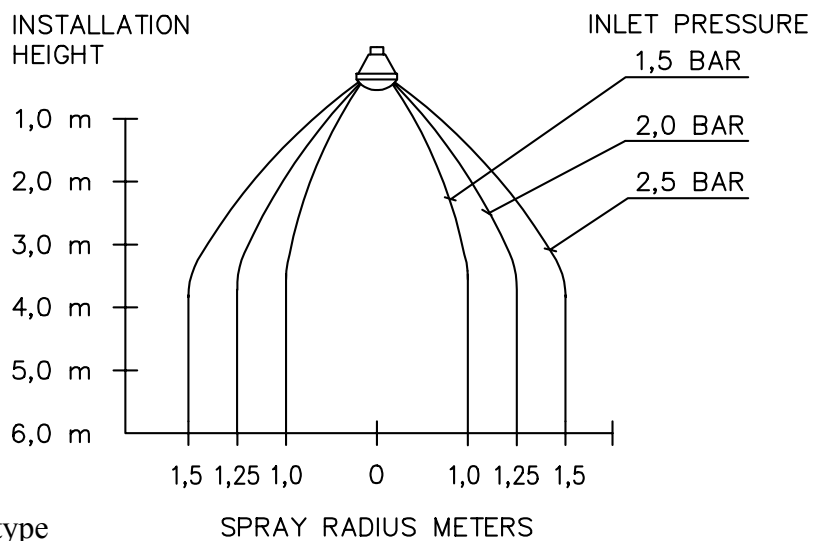


**Performance data**

1 bar = 0,1 MPa = 14,5 psi

Flow at inlet pressure 2,5 bar:	60 l/min
Flow can be calculated as follows	$Q = \sqrt{P} \times 38$
Foam expansion factor, approx:	12*
Connection:	Male 3/4" BSP
Material:	Basket Stainless steel
	Nozzle Bronze
Weight:	0,15 kg/0,33 lbs

**Spray pattern**



\* Depending on foam concentrate type



Technical changes reserved without notice