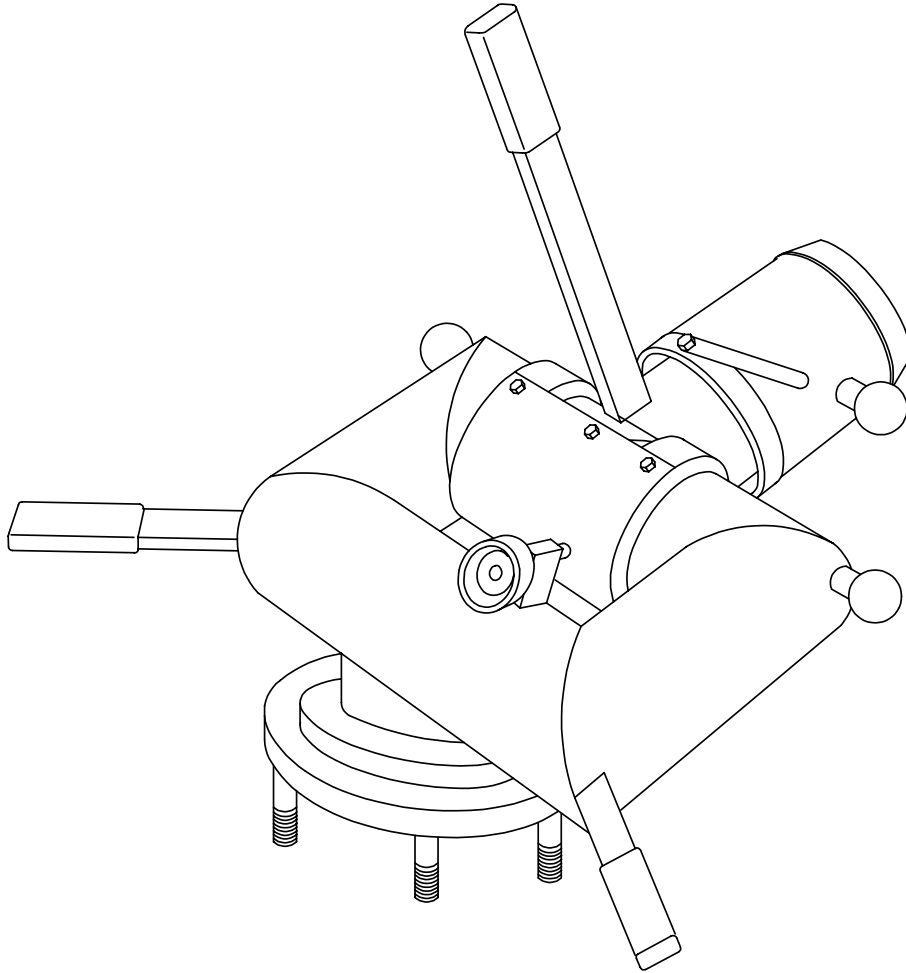


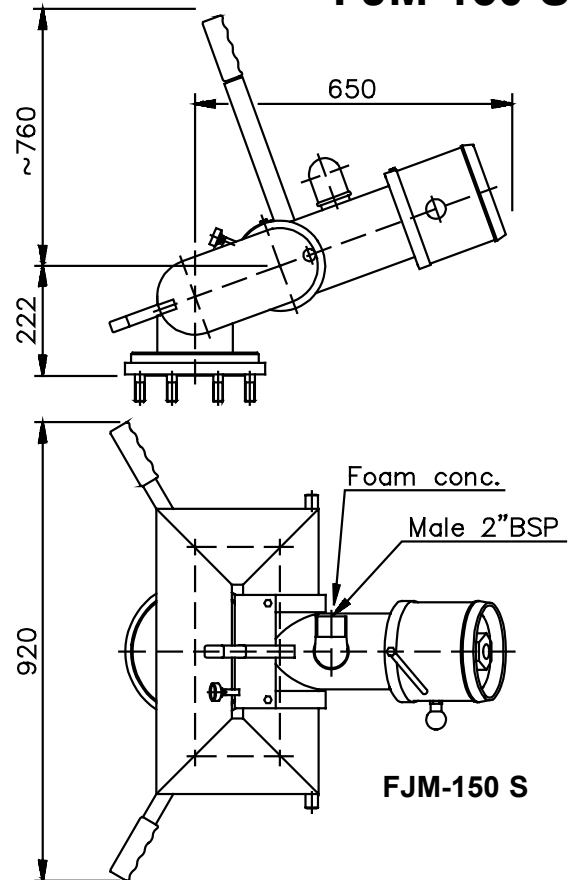
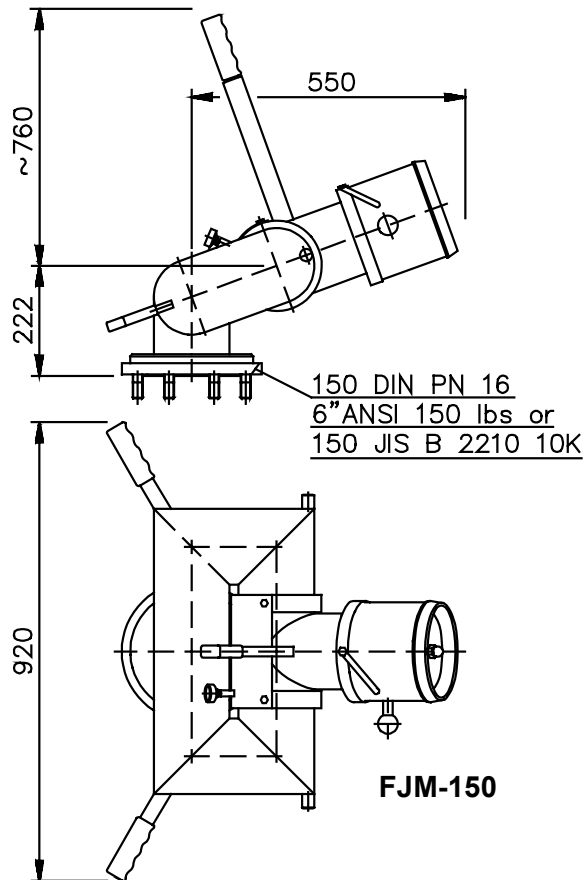
**FJM-150
FJM-150 S**

Description

The fog/jet fire monitor FJM-150 and FJM-150 S are powerful units with exceptional good throw characteristics. They are designed for an optimized delivery of water or foam in a solid jet as well as in a spray pattern. The monitors are of low weight due to the welded stainless steel construction. FJM-150 and FJM-150 S are intended for fixed mounting. They have a wide capacity range which

can easily be adjusted on site, to suit the local conditions. The FJM-150 S has an integrated foam concentrate inductor, eliminating the need for a separate proportioning system.

When running with foam the FJM-150 S shall be adjusted to nominal capacity for accurate proportioning.

Dimensions**FJM-150
FJM-150 S****Performance data****1 bar = 0,1 MPa = 14,5 psi**

Water capacity:	up to 11700 lit./min. at 10 bar
Max. working pressure:	16 bar/235 psi
Rotation:	360 degrees
Elevation:	-60 to +90 degrees
Inlet connection water:	150 DIN PN 16 or 6"ANSI 150 lbs or 150 JIS B 2210 10 K
Material:	Body: Stainless steel Nozzle, bearings: Bronze
Surface treatment:	Primer and red 2-component paint
Net weight approx:	FJM-150 47 kg/104 lbs, FJM-150 S 50 kg/110 lbs
Nozzle manually adjustable:	From jet to fog

FJM-150 S

Foam concentrate induction:	Max. 6%
Inlet connection foam:	Male 2" BSP
Suction hose and valve:	Optional

Water balanced slide bearings for rotation and elevation.



Technical changes reserved without notice