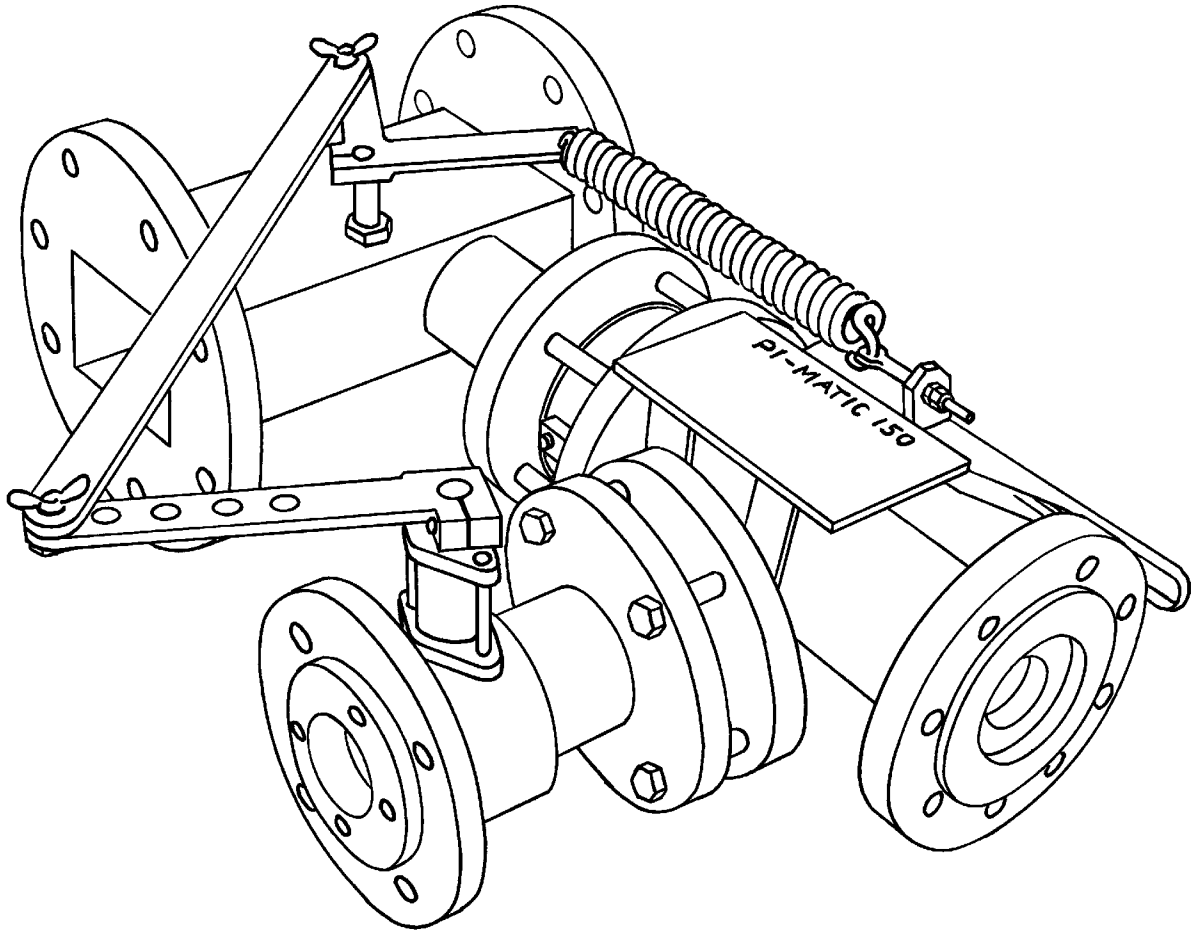


## PI-MATIC 150



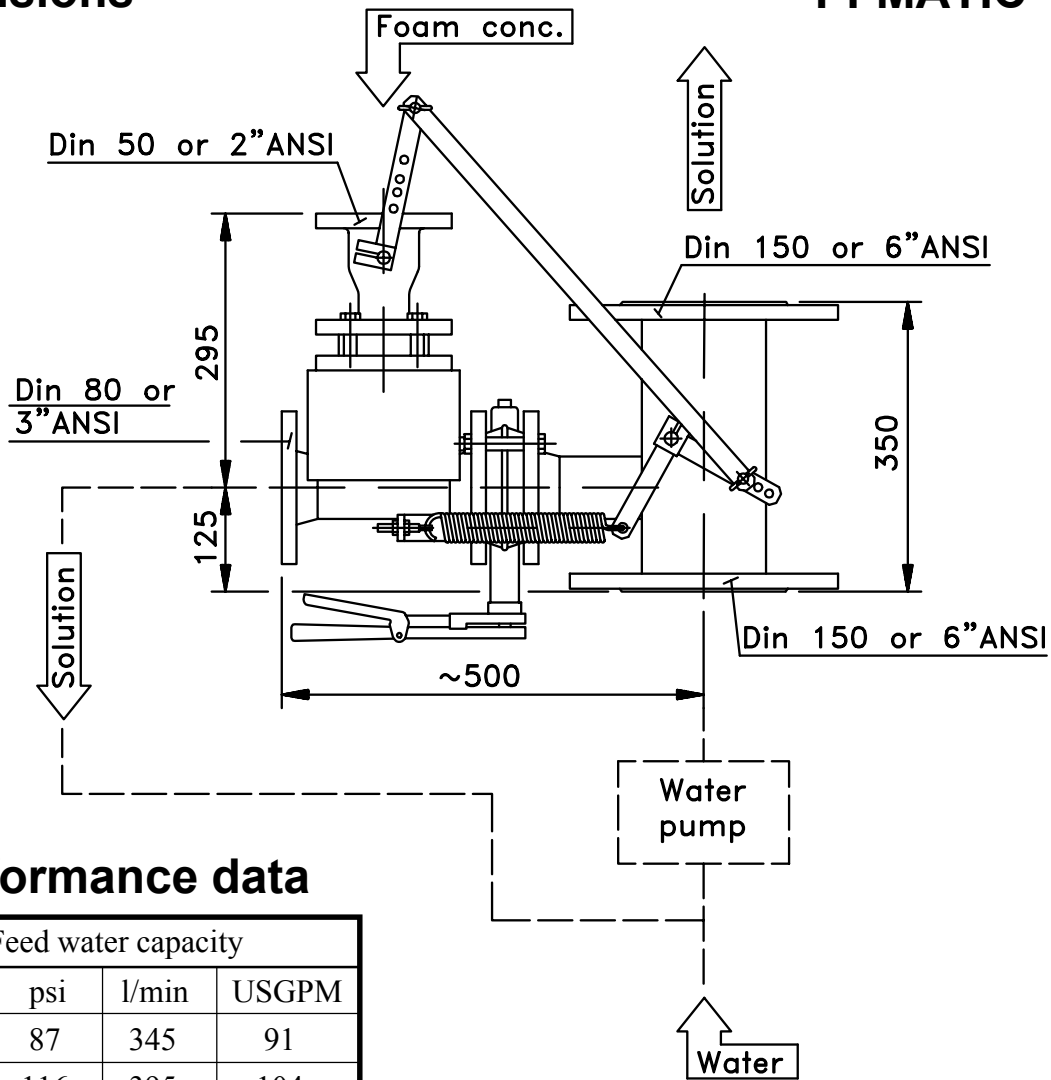
### Description

The PI-MATIC 150 is a self-adjusting around-the-pump foam concentrate inductor which works automatically within the range 400 l/min - 4000

l/min. The induction can easily be changed on site to the standard settings 3, 4, 6, or 8 % across the entire flow range to suit the actual requirements.

**Dimensions**

**PI-MATIC 150**



**Performance data**

Feed water capacity			
Bar	psi	l/min	USGPM
6	87	345	91
8	116	395	104
10	145	435	115
12	174	460	121

**1 bar = 0,1 MPa = 14,5 psi**

- Max. counter pressure: 0,5 bar/7,25 psi
- Max. working pressure: 16 bar/232 psi
- Water capacity: 400 l/min - 4000 l/min, 106 USGPM - 1057 USGPM
- Material:
  - Body: Epoxy coated steel
  - Nozzle, diffusor: Polypropylene
  - Valves: Steel/Stainless steel
- Weight: 56 kg/25,5 lbs



Technical changes reserved without notice